



Technology Associates International

# UTILITIES

## Risks and Issues Utility for Microsoft Office Project Server 2010

From one of the world's leading Microsoft Enterprise Project Premier Solution Providers.

Technology Associates International are delighted to launch a new utility which will increase the functionality of the Microsoft Office Enterprise Project Management Solution.

Microsoft Project Server is a powerful tool for centralising project plans and reporting across the enterprise. The Microsoft Office Enterprise Project Management solution utilises Windows SharePoint Services to enable Project Managers, Executives and Team Members to collaborate in a project workspace. This workspace allows for the entry of issues and risks on a per project basis, although each issue and risk can be linked to one or more tasks in a project.

This functionality, whilst useful for individual projects, is limited in the programme management environment where there is a requirement to view risks and issues across multiple projects. This utility allows users to see issues and risks grouped from multiple projects, thus supporting full Programme Management capability within a project workspace.

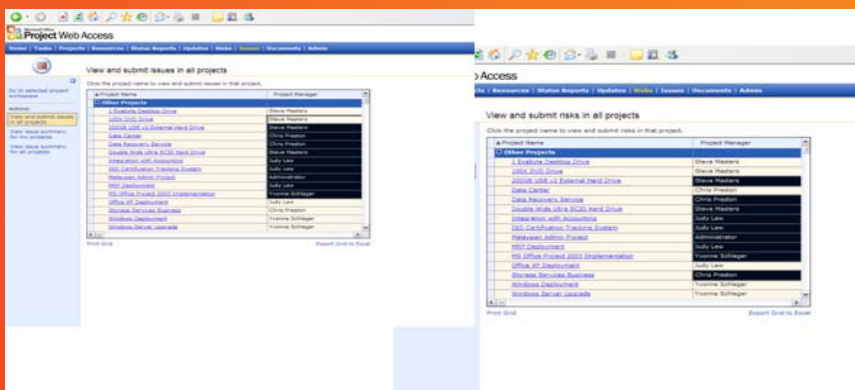
Any combination of projects can be selected (assuming that the user has the appropriate permissions to view these projects), so selection of projects is quick and easy.

Once a selection is made it can be saved so that accessing the workspace again at some point in the future means that the operation of selecting projects does not have to be performed again.

### Features:

- The ability to view Risks and Issues from multiple projects
- Project selection is user defined
- Selections can be saved for future use
- Manage a portfolio of risks/issues from a central location
- Quick and easy to install
- Only ONE copy per Project Server instance required

Contact Technology Associates for more information:



**System Requirements :**  
The View All Risks and Issues utility simply requires Microsoft Project Server to be installed. The View All Risks and Issues utility should be installed on the same system where Microsoft Project Server is installed. Project Server 2003 or 2007.



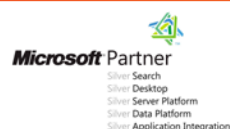
Technology House, Shottery Brook Office Park, Timothy's Bridge Road, Stratford-upon-Avon, Warwickshire, CV37 9NR

T: +44 (0)1789 292150

F: +44 (0)1789 292191

E: [info@techassoc.com](mailto:info@techassoc.com)

W: [www.techassoc.com](http://www.techassoc.com)



2007 INFORMATION WORKER SOLUTIONS PARTNER OF THE YEAR-FINALIST Enterprise Project Management